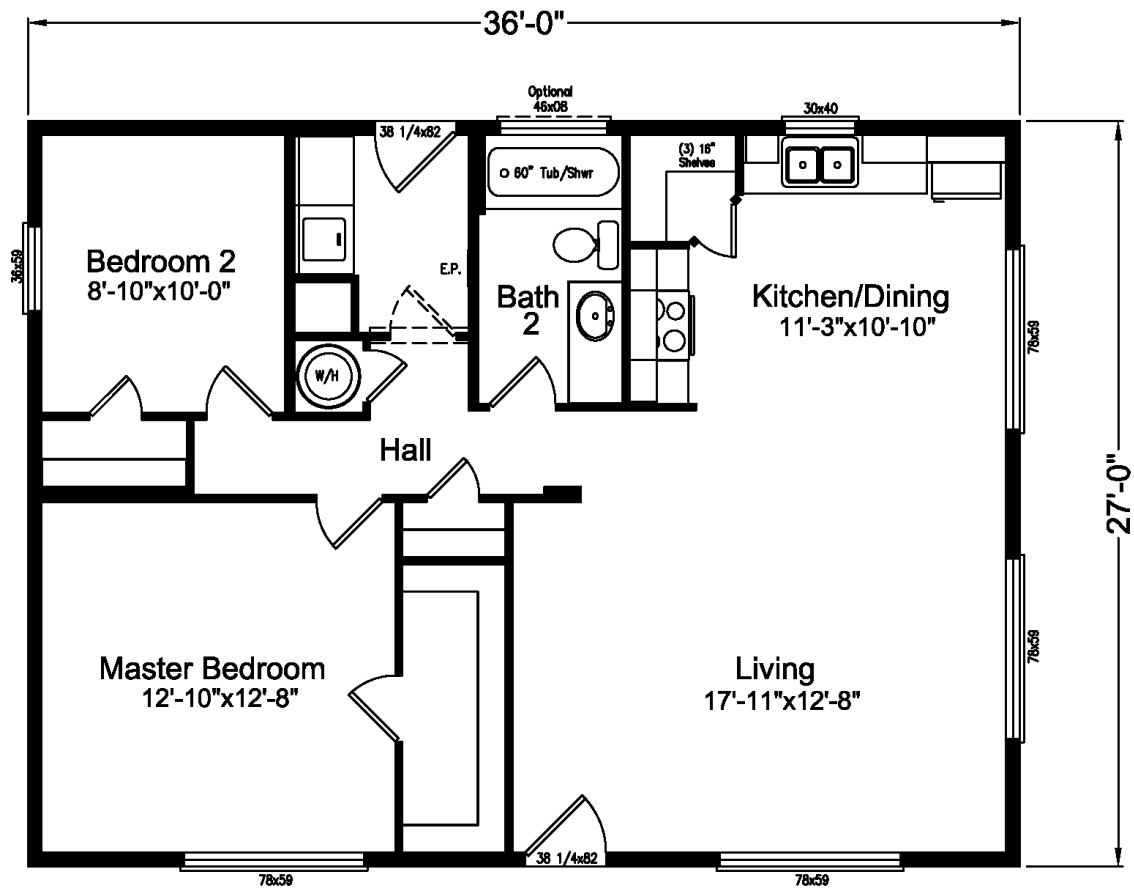




www.palmharbor.com



D River



D River


Model 4G28362A

N4P36S57

Approx. 972 Sq. Ft.

- 2 bedrooms, 1 baths
- Intimate cottage
- Optional full porch

Copyright © Palm Harbor Homes, Inc. Because Palm Harbor Homes has a continuous product updating and improvement process, prices, plans, dimensions, features, materials, specifications and availability are subject to change without notice or obligation. Please refer to working drawings for actual dimensions. Renderings and floor plans are artist's depictions only and may vary from the completed home. Square footage calculations and room dimensions are approximate subject to industry standards.

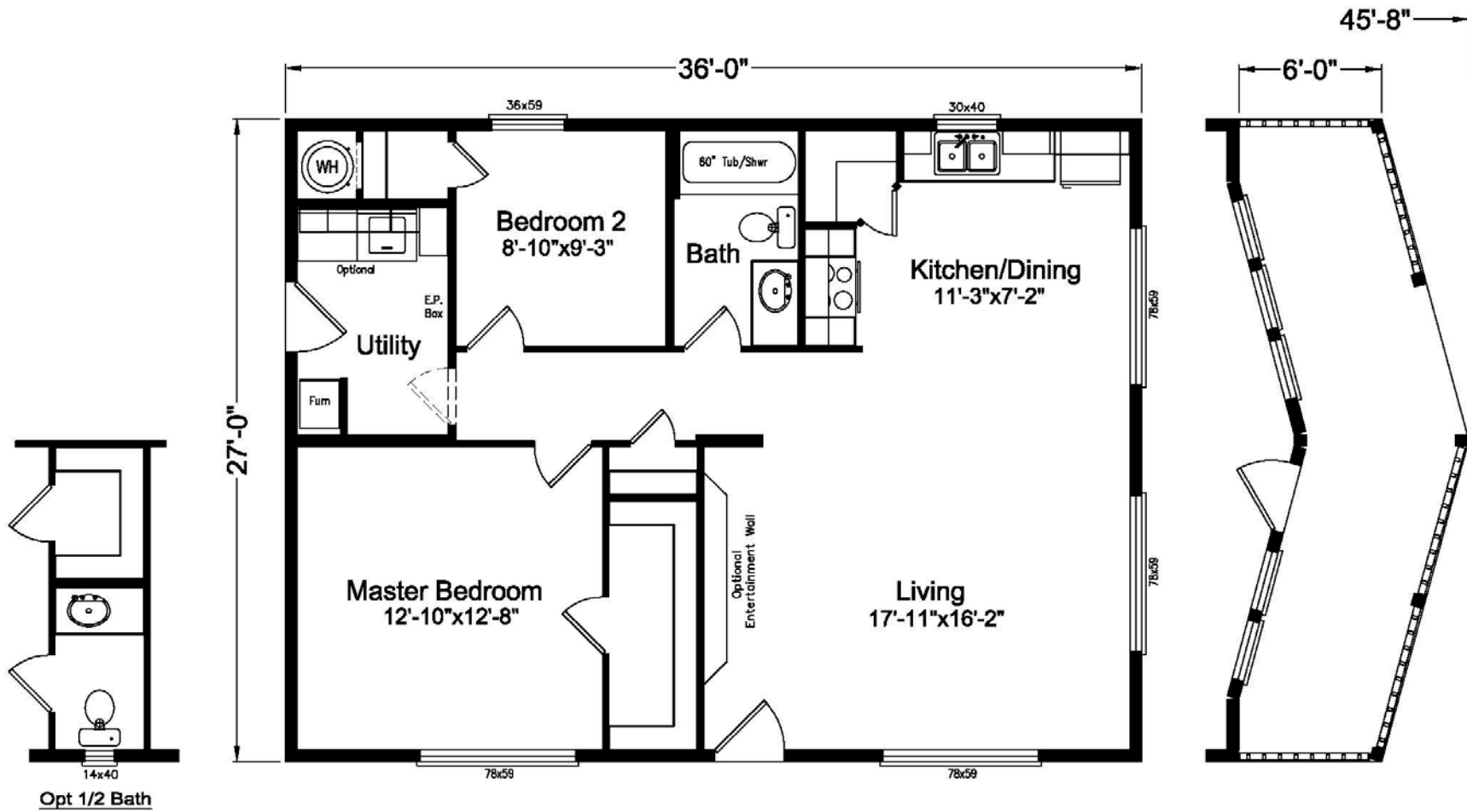
Rev. 02/18 



www.palmharbor.com



River's Edge



River's Edge

Model 4G28362B

N4P36S58

Approx. 972 Sq. Ft.

- 3 bedrooms, 1 bath
- Optional Prow Porch
- Optional Entertainment Center

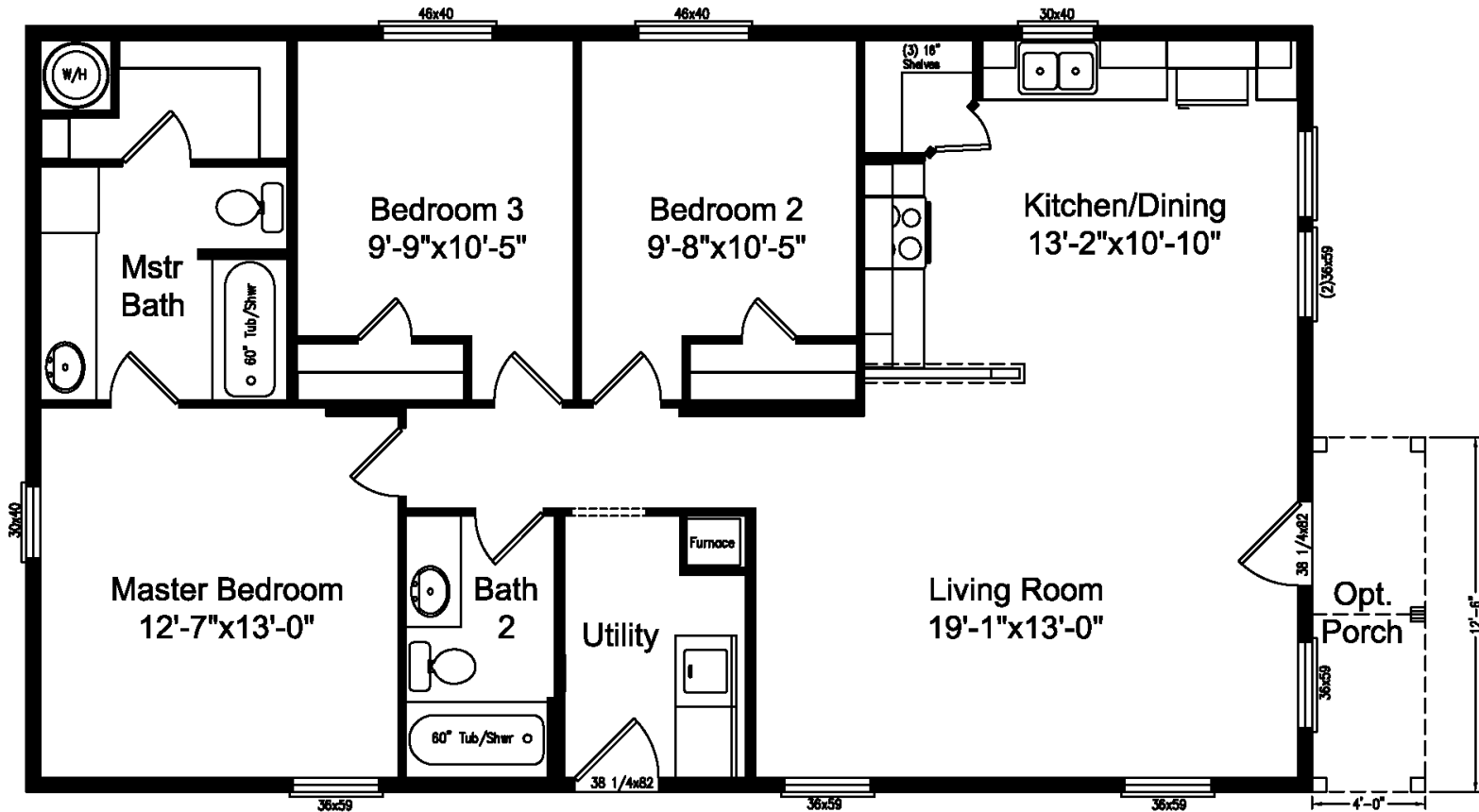
Copyright © Palm Harbor Homes, Inc. Because Palm Harbor Homes has a continuous product updating and improvement process, prices, plans, dimensions, features, materials, specifications and availability are subject to change without notice or obligation. Please refer to working drawings for actual dimensions. Renderings and floor plans are artist's depictions only and may vary from the completed home. Square footage calculations and room dimensions are approximate subject to industry standards.



www.palmharbor.com



River View



River View

Model 4G28463A

N4P344D7

Approx. 1224 Sq. Ft.

- 3 bedrooms, 2 baths
- Huge master bathroom with walk-in closet
- Walk-in pantry

Copyright © Palm Harbor Homes, Inc. Because Palm Harbor Homes has a continuous product updating and improvement process, prices, plans, dimensions, features, materials, specifications and availability are subject to change without notice or obligation. Please refer to working drawings for actual dimensions. Renderings and floor plans are artist's depictions only and may vary from the completed home. Square footage calculations and room dimensions are approximate subject to industry standards.

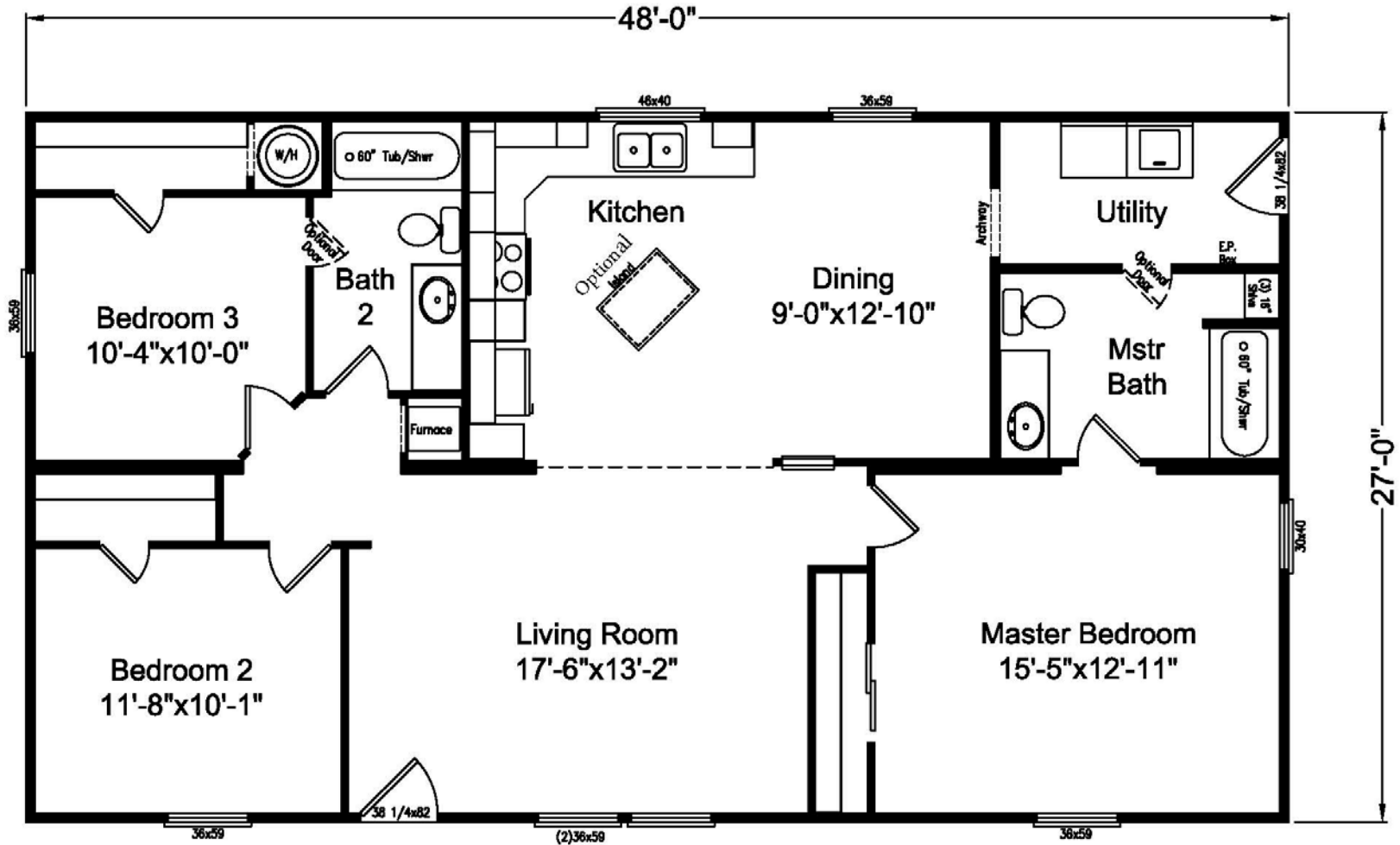
Rev. 02/18



www.palmharbor.com



Bay View II



Bay View II

Model 4G28483A

N4P48S09

Approx. 1296 Sq. Ft.

- 3 bedrooms, 2 baths
- Island kitchen
- Spacious kitchen with plenty of counter and storage space

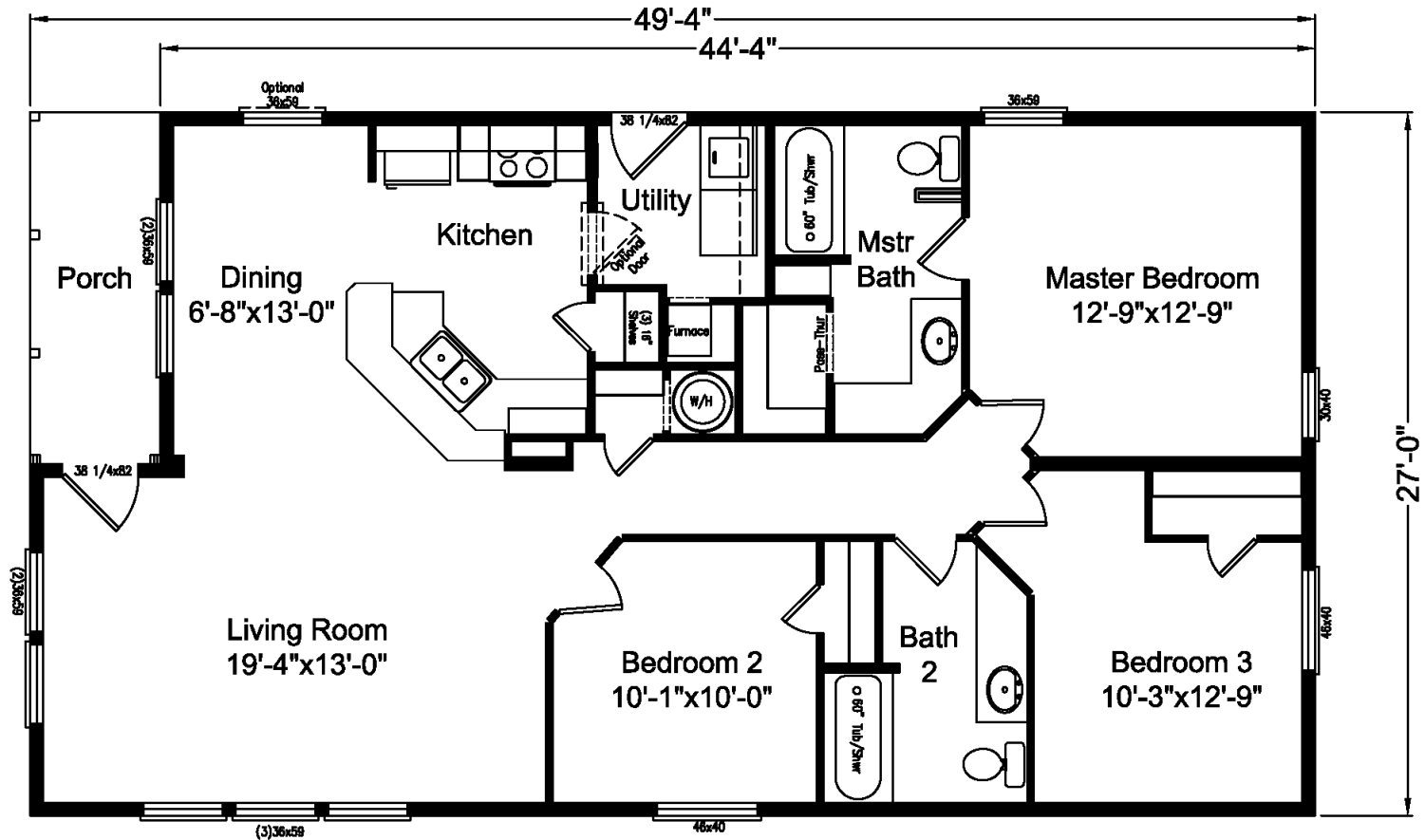
Copyright © Palm Harbor Homes, Inc. Because Palm Harbor Homes has a continuous product updating and improvement process, prices, plans, dimensions, features, materials, specifications and availability are subject to change without notice or obligation. Please refer to working drawings for actual dimensions. Renderings and floor plans are artist's depictions only and may vary from the completed home. Square footage calculations and room dimensions are approximate subject to industry standards.



www.palmharbor.com



Harbor View



Harbor View

Model 4G28503B

N4P349A7

Approx. 1236 Sq. Ft.

- 3 bedrooms, 2 baths
- Front porch
- Raised eating bar

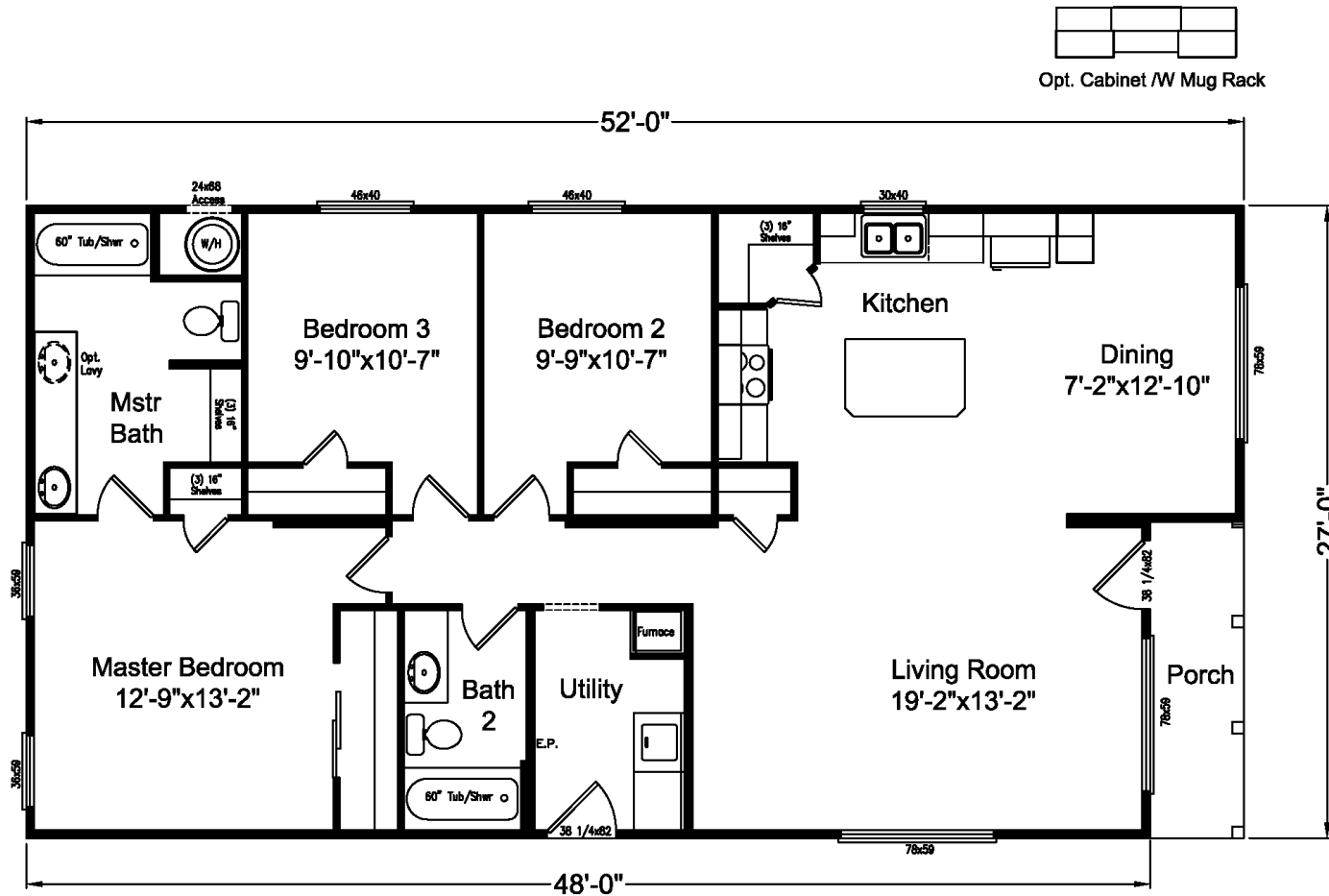
Copyright © Palm Harbor Homes, Inc. Because Palm Harbor Homes has a continuous product updating and improvement process, prices, plans, dimensions, features, materials, specifications and availability are subject to change without notice or obligation. Please refer to working drawings for actual dimensions. Renderings and floor plans are artist's depictions only and may vary from the completed home. Square footage calculations and room dimensions are approximate subject to industry standards.



www.palmharbor.com



The Frontier



Opt. Cabinet /W Mug Rack

The Frontier

Model 4G28523A

N4P4S100

Approx. 1365 Sq. Ft.

- 3 bedrooms, 2 baths
- Charming front porch
- Walk-in pantry
- Coat closet

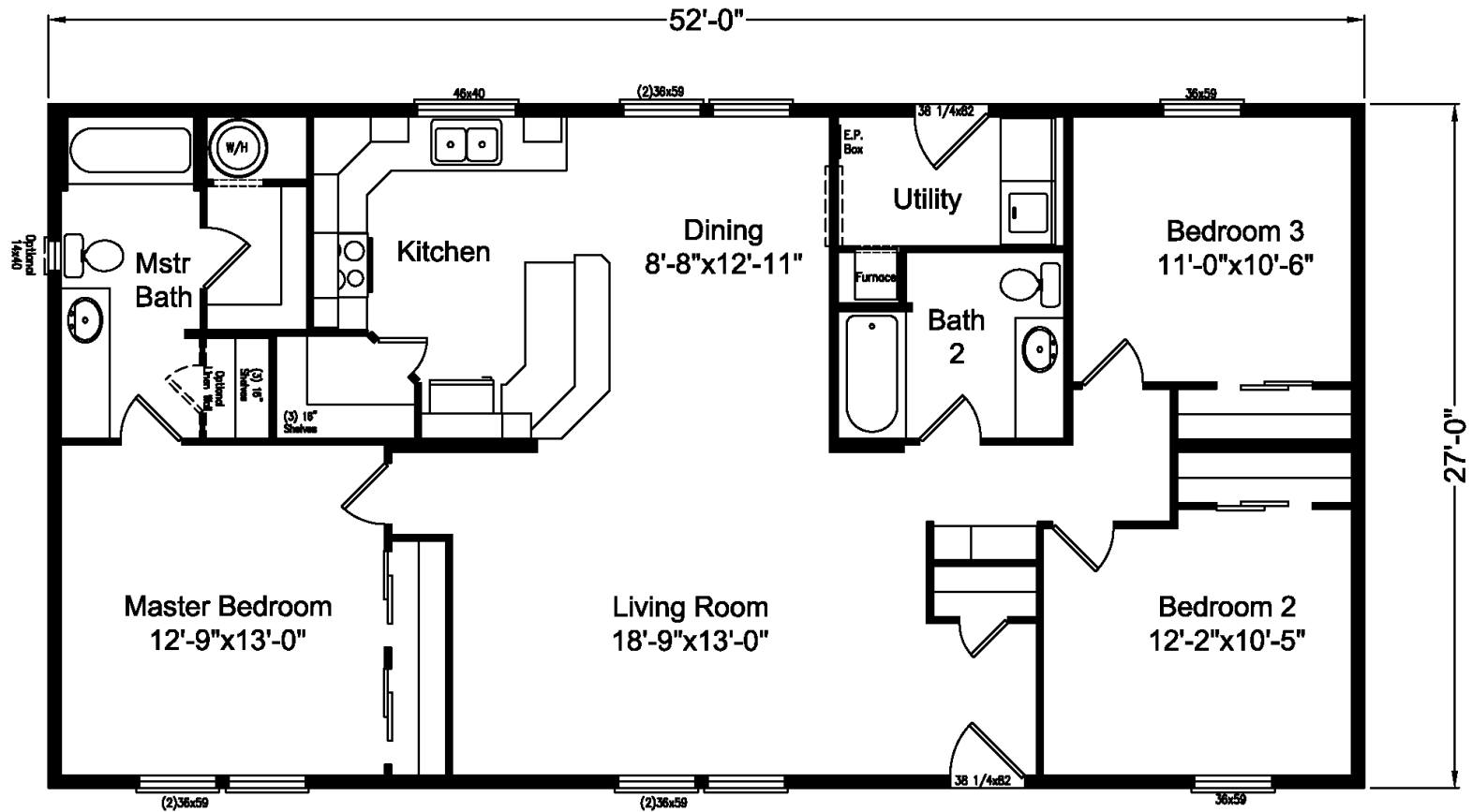
Copyright © Palm Harbor Homes, Inc. Because Palm Harbor Homes has a continuous product updating and improvement process, prices, plans, dimensions, features, materials, specifications and availability are subject to change without notice or obligation. Please refer to working drawings for actual dimensions. Renderings and floor plans are artist's depictions only and may vary from the completed home. Square footage calculations and room dimensions are approximate subject to industry standards.



www.palmharbor.com



The Columbia



The Columbia

Model 4G28523B

N4P352F5

Approx. 1404 Sq. Ft.

- 3 bedrooms, 2 baths
- Oversized walk-in pantry in kitchen
- Coat closet in entry area
- Linen storage

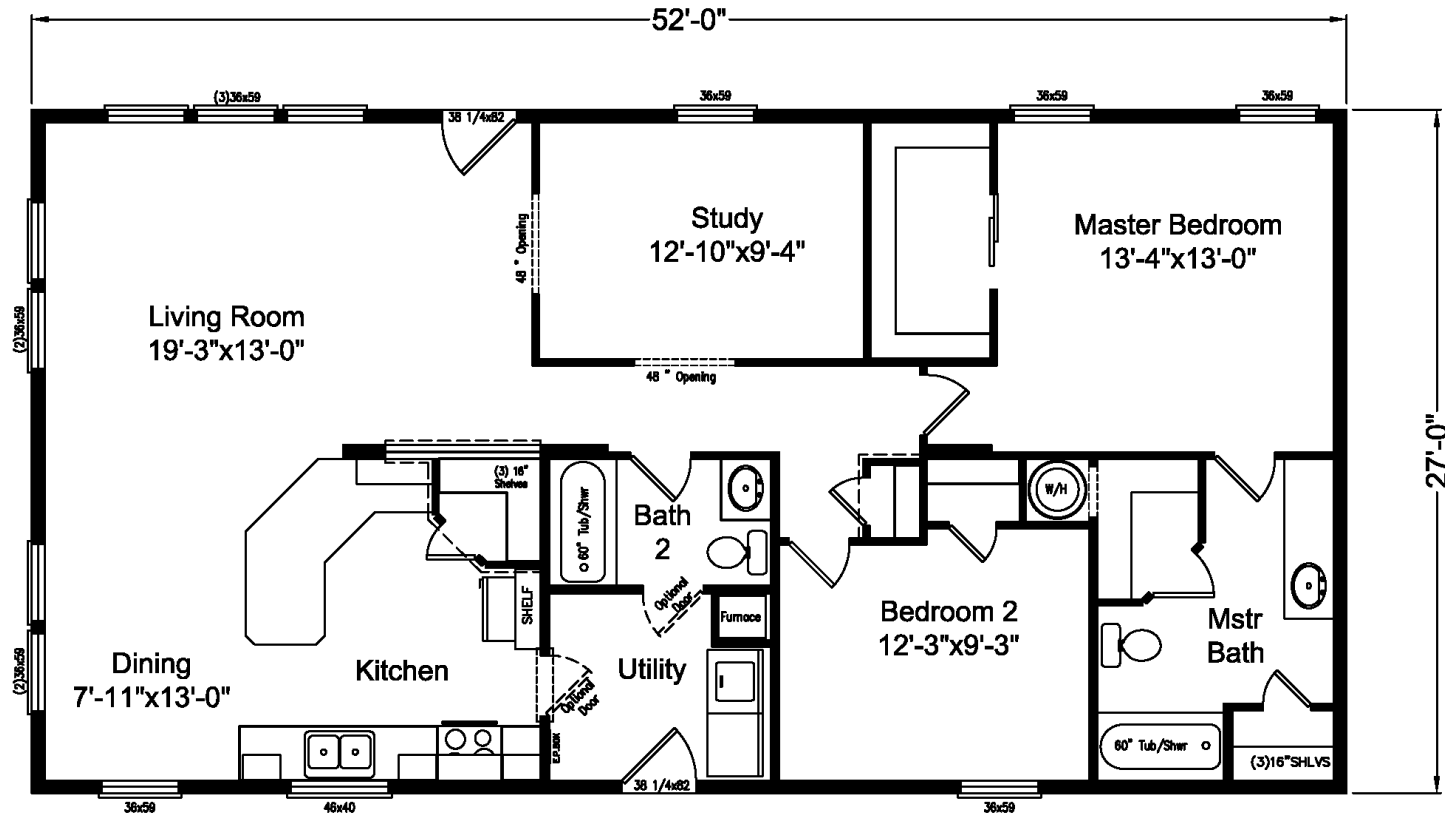
Copyright © Palm Harbor Homes, Inc. Because Palm Harbor Homes has a continuous product updating and improvement process, prices, plans, dimensions, features, materials, specifications and availability are subject to change without notice or obligation. Please refer to working drawings for actual dimensions. Renderings and floor plans are artist's depictions only and may vary from the completed home. Square footage calculations and room dimensions are approximate subject to industry standards.



www.palmharbor.com



The Metolius



The Metolius

Model 4G28522A

N4P252J4

Approx. 1404 Sq. Ft.

- 2 bedrooms, 2 baths
- Walk-in closets in master bedroom and bathroom
- Study or optional third bedroom
- Wrap around kitchen
- Walk-in pantry

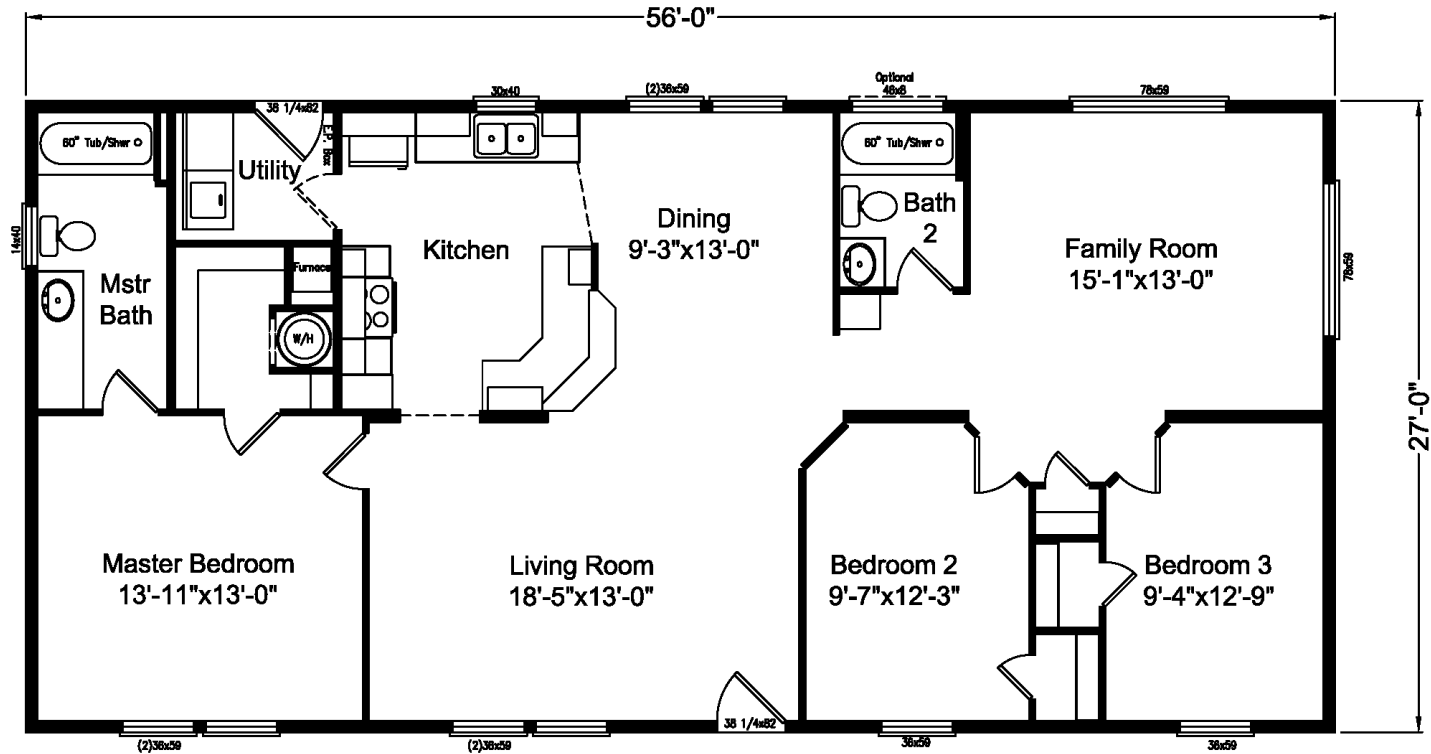
Copyright © Palm Harbor Homes, Inc. Because Palm Harbor Homes has a continuous product updating and improvement process, prices, plans, dimensions, features, materials, specifications and availability are subject to change without notice or obligation. Please refer to working drawings for actual dimensions. Renderings and floor plans are artist's depictions only and may vary from the completed home. Square footage calculations and room dimensions are approximate subject to industry standards.



www.palmharbor.com



Klamath



Klamath

Model 4G28563A

N4P56S49

Approx. 1512 Sq. Ft.

- 3 bedrooms, 2 baths
- Two living areas
- Master bedroom with spacious walk-in closet
- Spacious kitchen with

breakfast bar

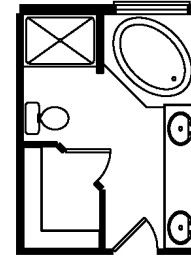
Copyright © Palm Harbor Homes, Inc. Because Palm Harbor Homes has a continuous product updating and improvement process, prices, plans, dimensions, features, materials, specifications and availability are subject to change without notice or obligation. Please refer to working drawings for actual dimensions. Renderings and floor plans are artist's depictions only and may vary from the completed home. Square footage calculations and room dimensions are approximate subject to industry standards.



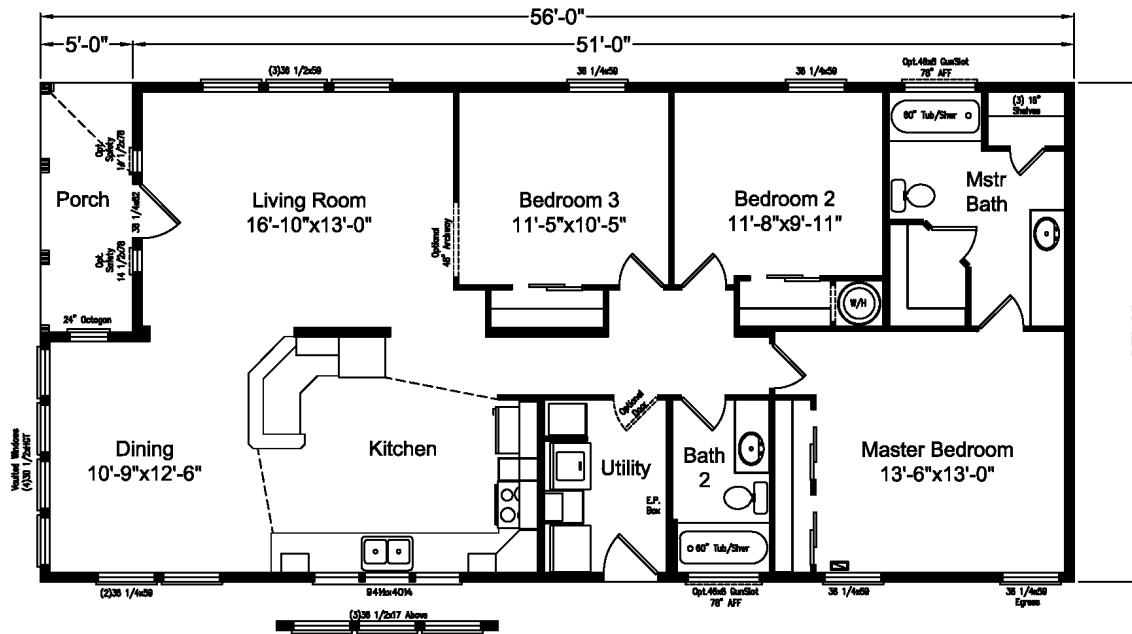
www.palmharbor.com



The Sunset Bay



Optional Master Bath



The Sunset Bay

Model 4G28563B

N4P56S52

Approx. 1512 Sq. Ft.

- 3 bedrooms, 2 baths
- Spacious kitchen with island and serving bar
- Separate dining room
- Third bedroom can be

- optional den with graceful arched entries
- Covered porch

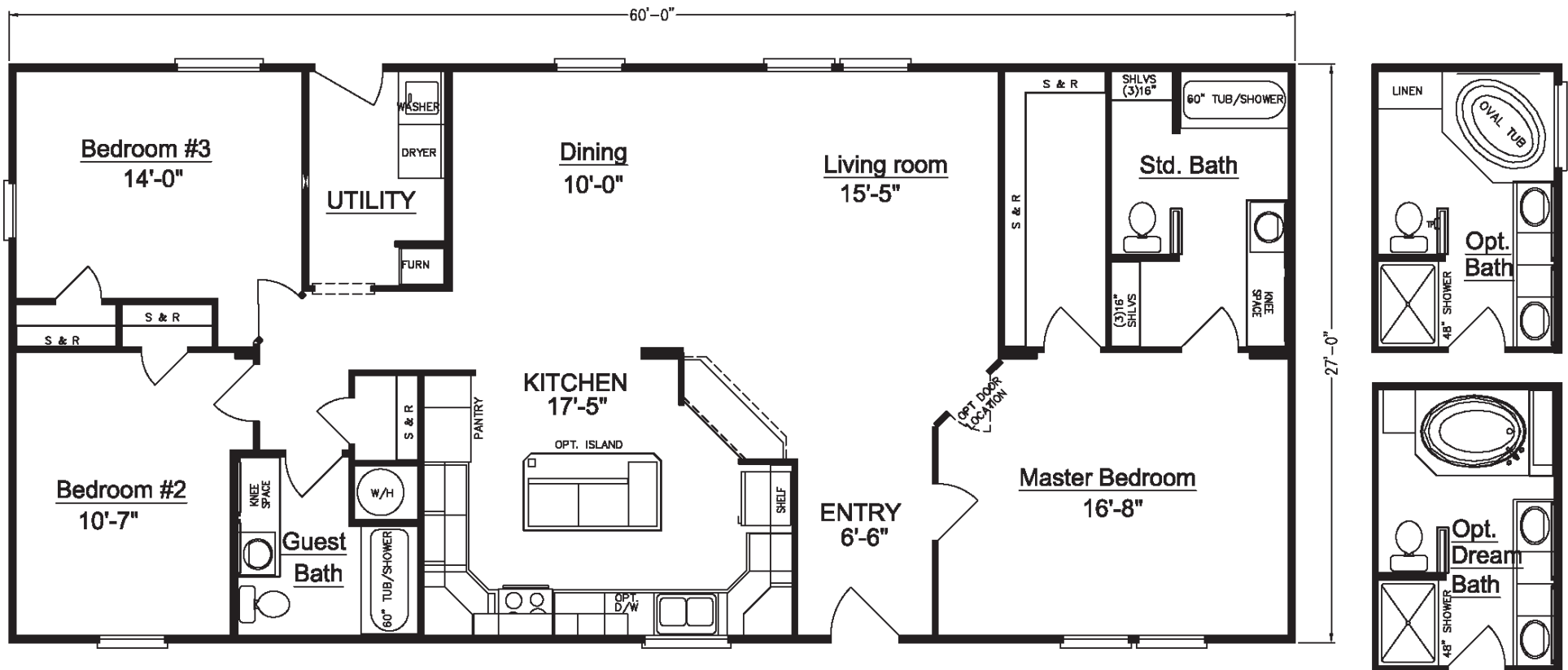
Copyright © Palm Harbor Homes, Inc. Because Palm Harbor Homes has a continuous product updating and improvement process, prices, plans, dimensions, features, materials, specifications and availability are subject to change without notice or obligation. Please refer to working drawings for actual dimensions. Renderings and floor plans are artist's depictions only and may vary from the completed home. Square footage calculations and room dimensions are approximate subject to industry standards.



www.palmharbor.com



Truman I



Truman I

Model 4G28603A
N4P360A1
Approx. 1620 Sq. Ft.

- 3 bedrooms, 2 baths
- Huge kitchen with conversation bar
- Optional kitchen island
- Available with front utility

option for garage access

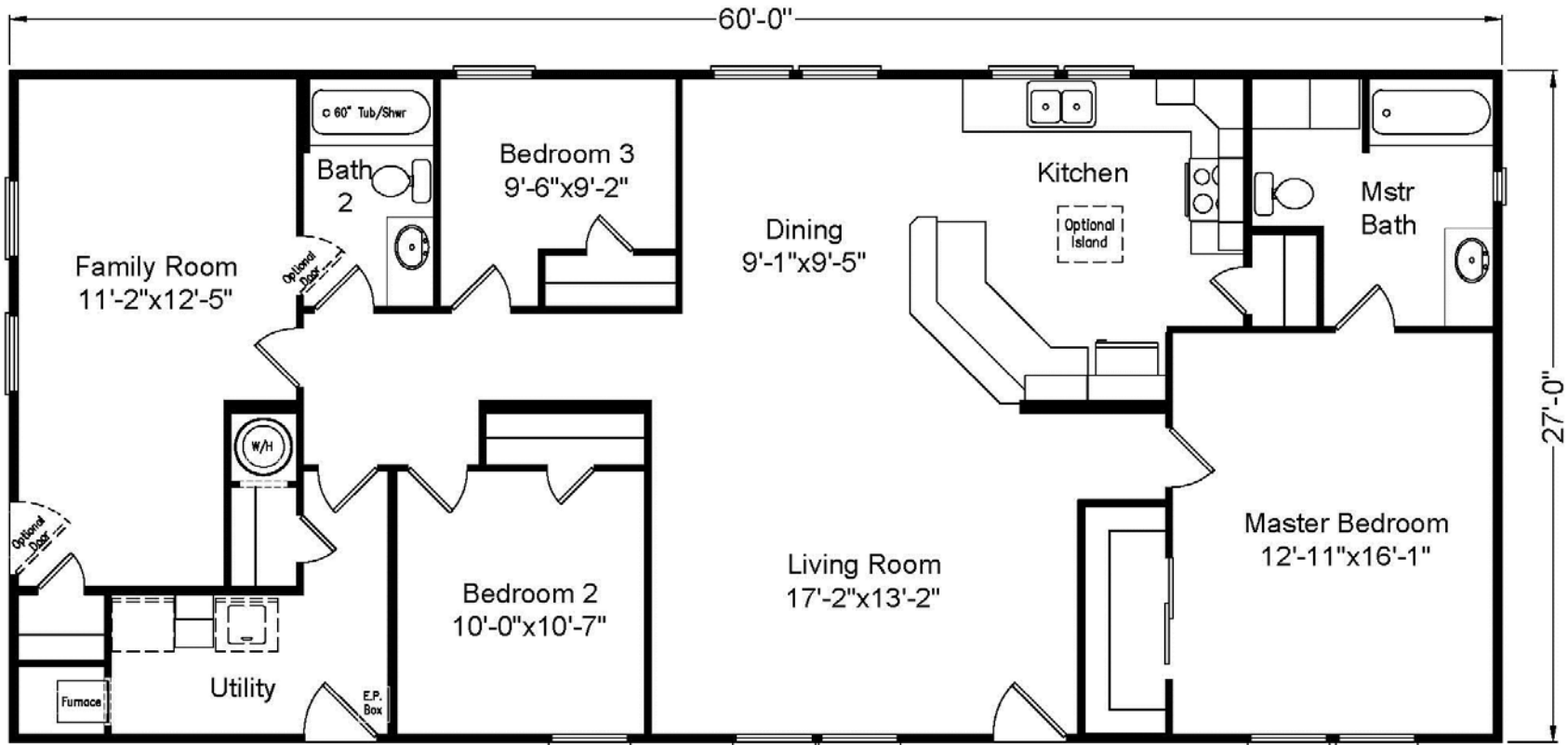
Copyright © Palm Harbor Homes, Inc. Because Palm Harbor Homes has a continuous product updating and improvement process, prices, plans, dimensions, features, materials, specifications and availability are subject to change without notice or obligation. Please refer to working drawings for actual dimensions. Renderings and floor plans are artist's depictions only and may vary from the completed home. Square footage calculations and room dimensions are approximate subject to industry standards.



www.palmharbor.com



The Santiam



The Santiam

Model 4G28603C

N4P60S14

Approx. 1620 Sq. Ft.

- 3 bedrooms, 2 baths
- Kitchen island
- Walk-in master bedroom closet
- Available Optional Kitchenette

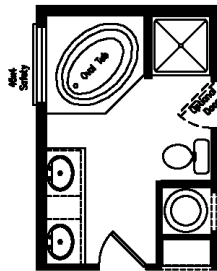
Copyright © Palm Harbor Homes, Inc. Because Palm Harbor Homes has a continuous product updating and improvement process, prices, plans, dimensions, features, materials, specifications and availability are subject to change without notice or obligation. Please refer to working drawings for actual dimensions. Renderings and floor plans are artist's depictions only and may vary from the completed home. Square footage calculations and room dimensions are approximate subject to industry standards.



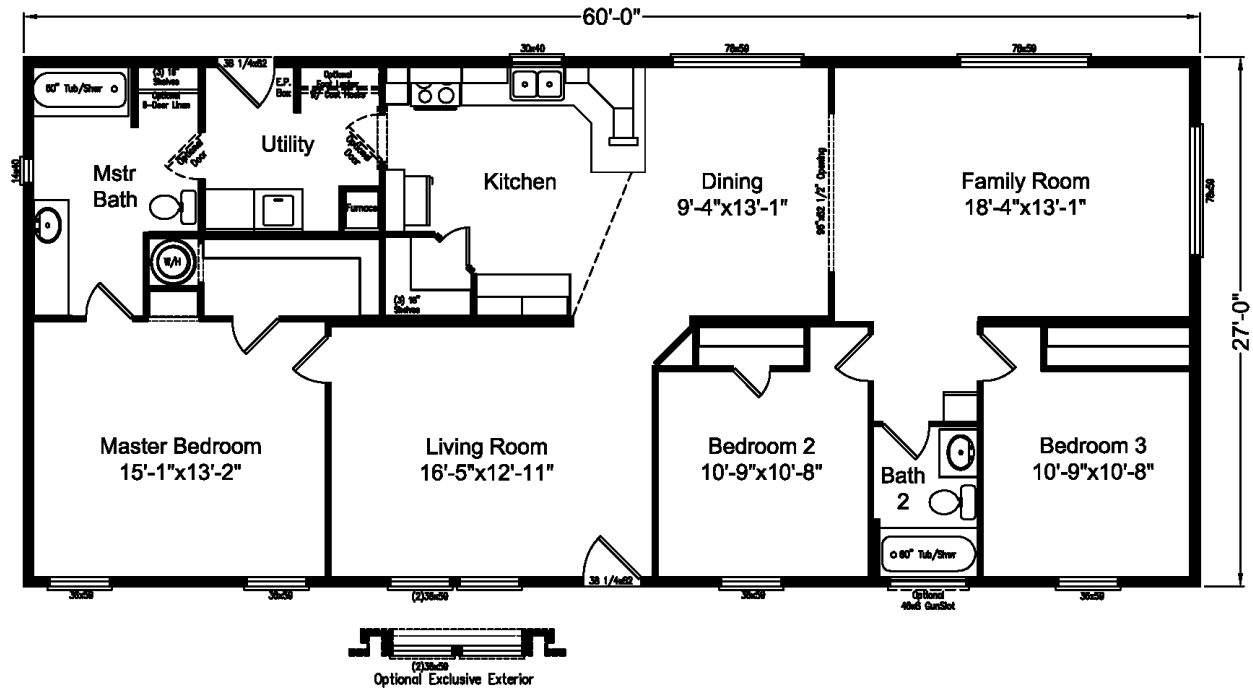
www.palmharbor.com



Chinook



Optional Master Bath



Chinook

Model 4G28603D

N4P60S58

Approx. 1620 Sq. Ft.

- 3 bedrooms, 2 baths
- Walk-in pantry
- Includes living room and family room

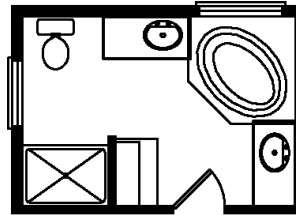
Copyright © Palm Harbor Homes, Inc. Because Palm Harbor Homes has a continuous product updating and improvement process, prices, plans, dimensions, features, materials, specifications and availability are subject to change without notice or obligation. Please refer to working drawings for actual dimensions. Renderings and floor plans are artist's depictions only and may vary from the completed home. Square footage calculations and room dimensions are approximate subject to industry standards.



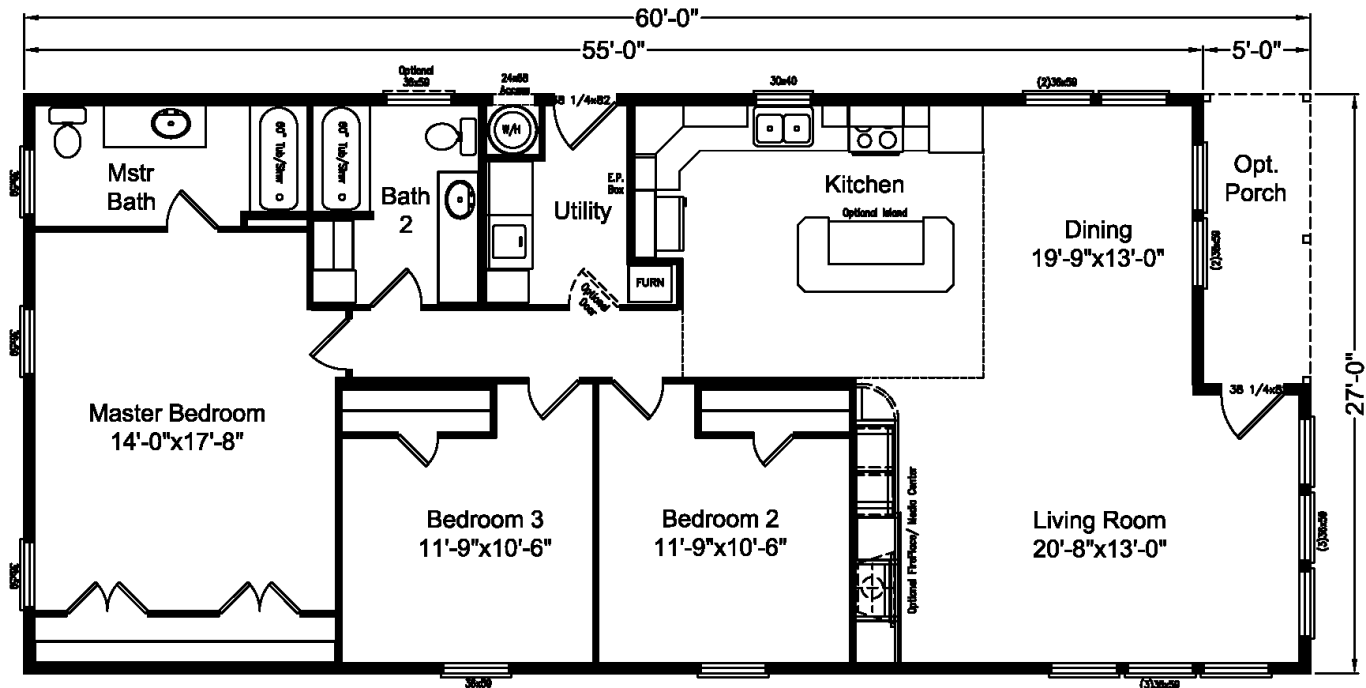
www.palmharbor.com



California



Optional Master Bath



California

Model 4G28603E
N4P360H8
Approx. 1552 Sq. Ft.

- 3 bedrooms, 2 baths
- Open floor plan with spacious kitchen, dining, and living area
- Master suite features large

closet with two sets of double doors

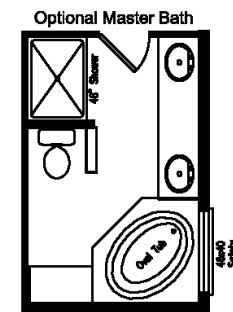
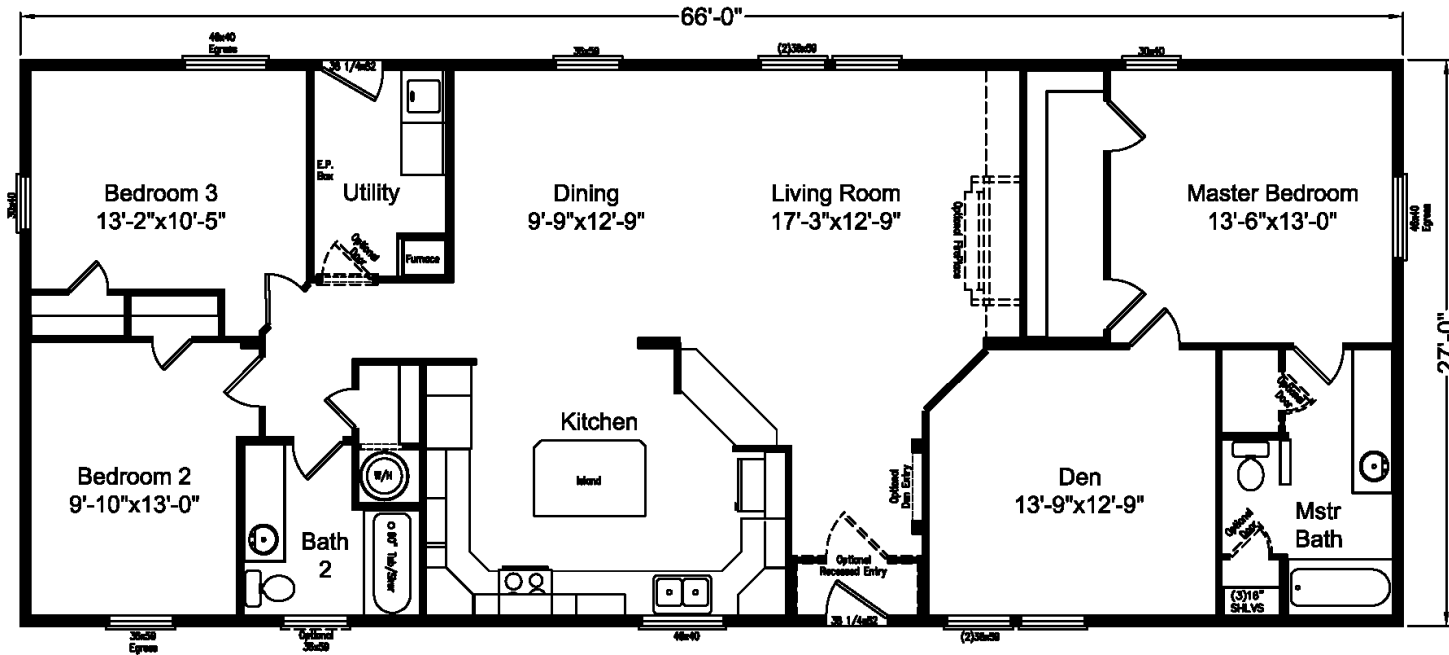
Copyright © Palm Harbor Homes, Inc. Because Palm Harbor Homes has a continuous product updating and improvement process, prices, plans, dimensions, features, materials, specifications and availability are subject to change without notice or obligation. Please refer to working drawings for actual dimensions. Renderings and floor plans are artist's depictions only and may vary from the completed home. Square footage calculations and room dimensions are approximate subject to industry standards.



www.palmharbor.com



Truman III



Truman III

Model 4G28663A
N4P366A1
Approx. 1782 Sq. Ft.

- 3 bedrooms, 2 baths
- Gourmet kitchen with tons of storage and pass-through to living room
- Spacious den retreat
- Huge double walk-in closet in door master bedroom
- Alternate front utility for garage access

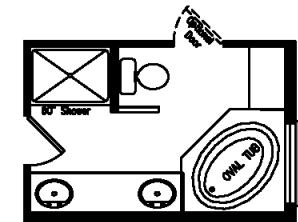
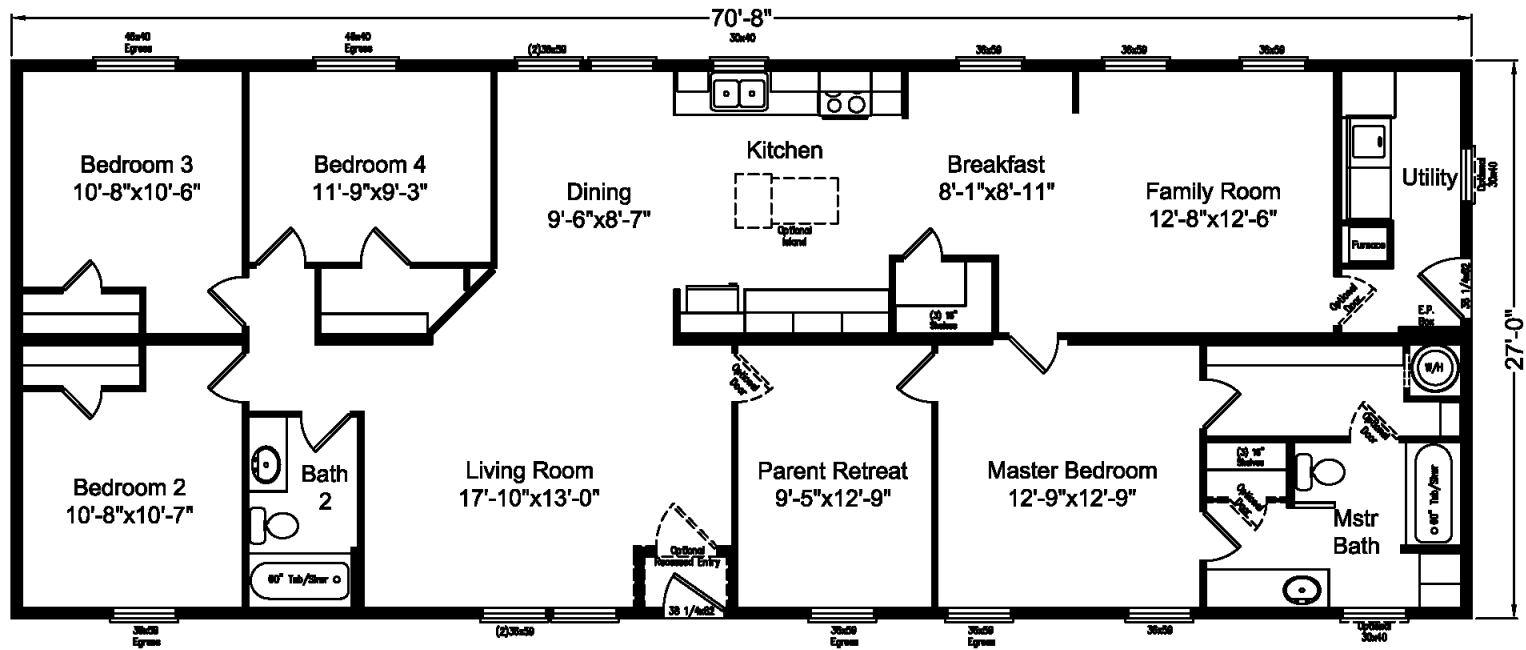
Copyright © Palm Harbor Homes, Inc. Because Palm Harbor Homes has a continuous product updating and improvement process, prices, plans, dimensions, features, materials, specifications and availability are subject to change without notice or obligation. Please refer to working drawings for actual dimensions. Renderings and floor plans are artist's depictions only and may vary from the completed home. Square footage calculations and room dimensions are approximate subject to industry standards.



www.palmharbor.com



The Wilson



Optional Master Bath

The Wilson

Model 4G28714A

N4P471A5

Approx. 1908 Sq. Ft.

- 4 bedrooms, 2 baths
- Walk through kitchen area
- Family room and living room
- Parent's retreat next to master bedroom

Copyright © Palm Harbor Homes, Inc. Because Palm Harbor Homes has a continuous product updating and improvement process, prices, plans, dimensions, features, materials, specifications and availability are subject to change without notice or obligation. Please refer to working drawings for actual dimensions. Renderings and floor plans are artist's depictions only and may vary from the completed home. Square footage calculations and room dimensions are approximate subject to industry standards.